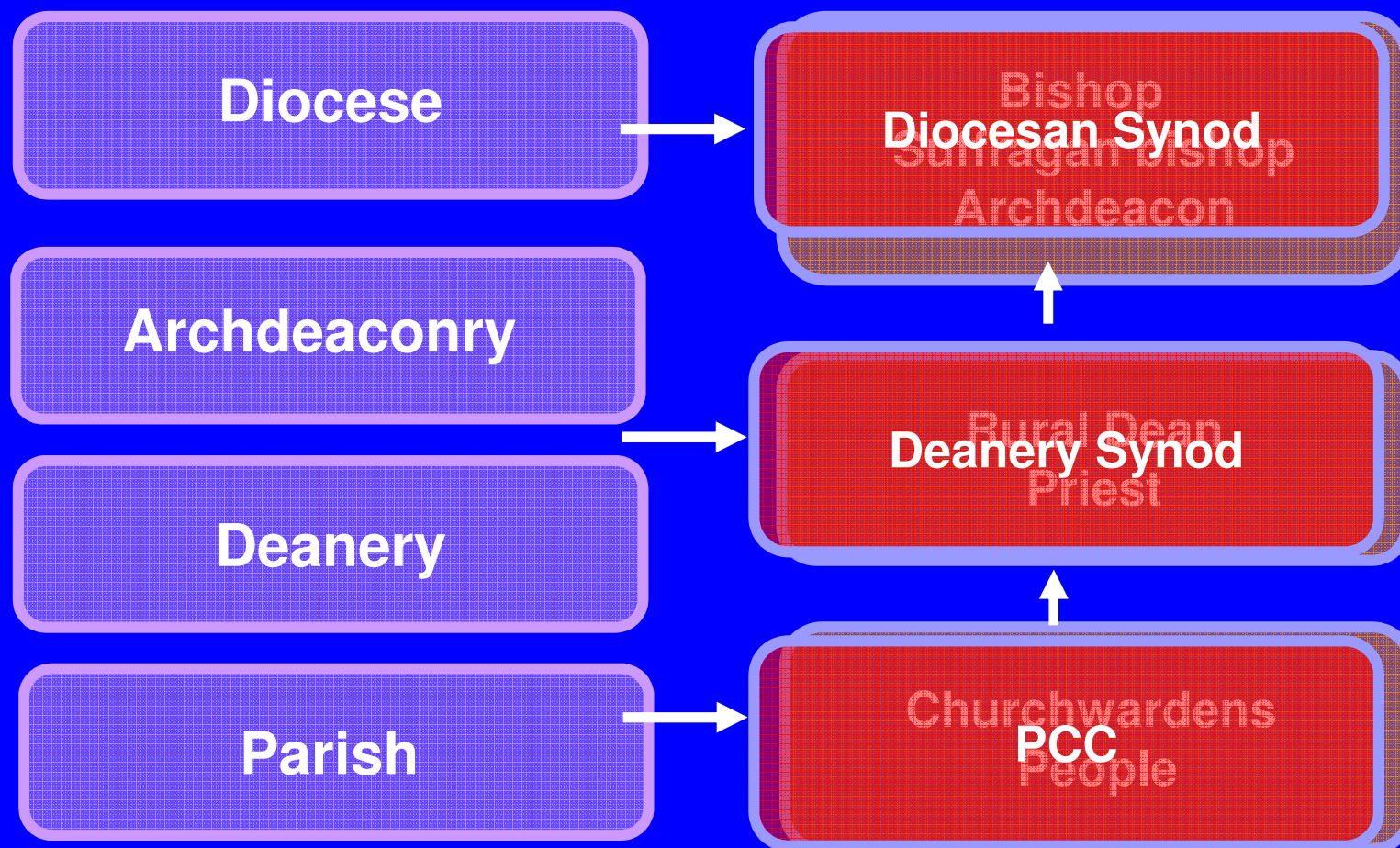


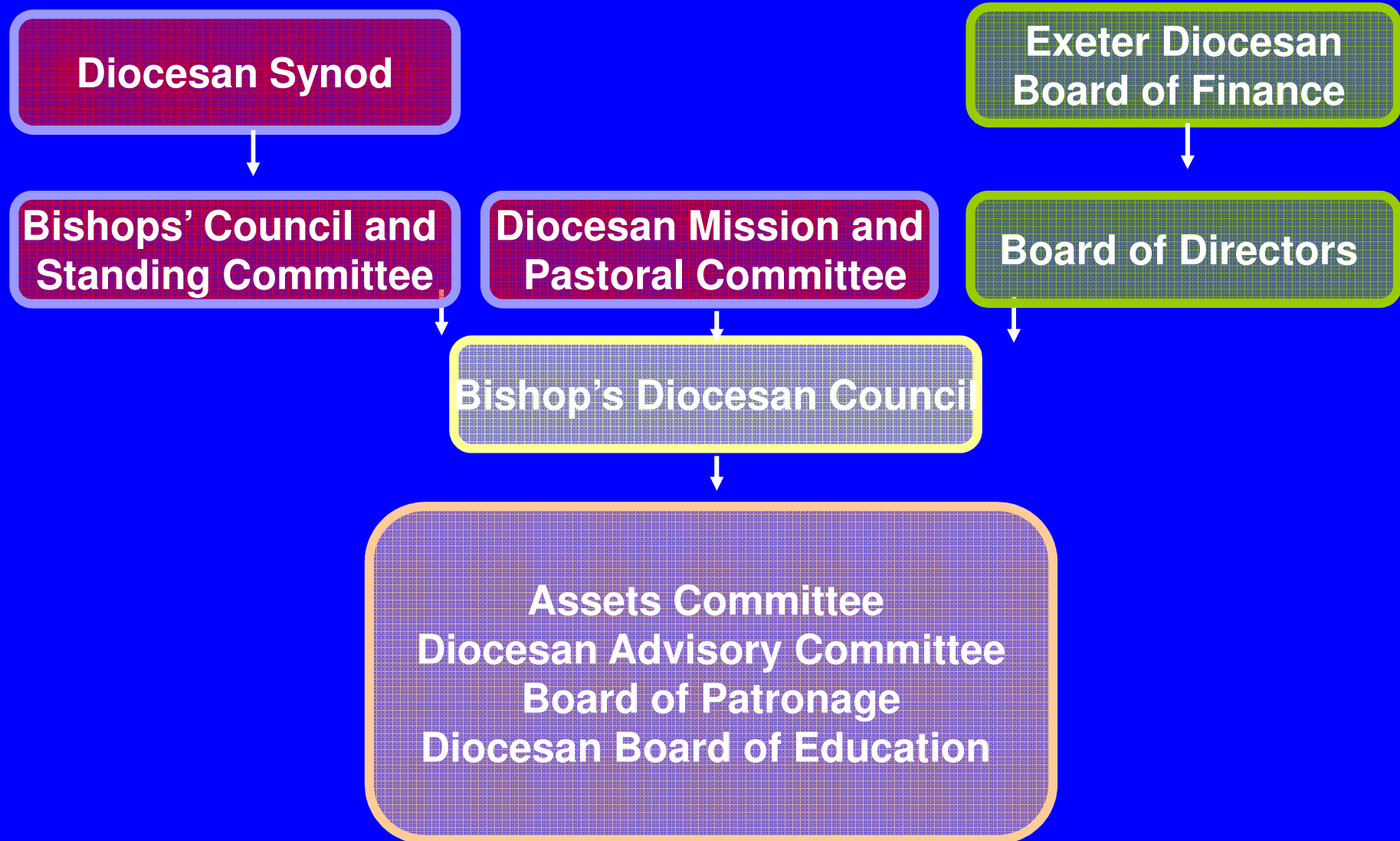
Parishes and the Law

Martin Follett

Structure of the Diocese



Structure of the Diocese



A photograph of a middle-aged man with a receding hairline, smiling at the camera. He is wearing a light-colored suit jacket over a blue and white checkered shirt and a light-colored tie. He is holding a black mace with a silver crown-shaped finial in his right hand. The background is the interior of a church, featuring dark wood paneling, arched windows with stained glass, and a high ceiling with wooden beams. The lighting is warm and indoor.

Qualifications of churchwardens

- On the church electoral roll of the parish
- Actual communicant member of C of E
- 21 years and upwards

Qualifications of churchwardens

- Not disqualified
- Proposed churchwarden must consent
- Not consented in any other parish (except a related parish)





Disqualifications

- s 178 (1) Charities Act 2011
- Convicted of an offence in schedule 1 Childrens and Young Persons Act 1933
- s 10 Incumbents (Vacation of Benefices) Measure 1977



Length of service

- Six years
- Parishioners may resolve this does not apply

A photograph of a stone archway with a black door. The arch is made of rough-hewn stone blocks. To the left of the door, there is a small plaque with the year '1804' inscribed on it. The background is a light blue sky.

Annual parish meeting

- Meeting of the parishioners
- Annually not later than 30th April
- Bishop's powers
- Nomination may be vetoed by the minister



Admission

- Declaration to faithfully and diligently perform duties
- Sign a declaration to that effect
- Sign a declaration that not disqualified

Resignation

- Notice in writing to the Bishop
- Effective two months after the notice
- or earlier by the Bishop after consulting the minister and other churchwarden
- Automatic vacation if churchwarden ceases to be on the church electoral roll or if he becomes disqualified
- Continue until appointment of a replacement or the following 31st July, whichever is the earlier



Churchwardens' Duties

- Officers of the Bishop
- Foremost in representing the laity and co-operating with the incumbent
- Use their best endeavours by example and precept to encourage the parishioners in the practice of true religion and to promote unity and peace among them

Churchwardens' Duties

- Discharge the duties assigned to them by law and custom
- Maintain order and decency in the church and churchyard
- Hold the title and moveable goods of the church



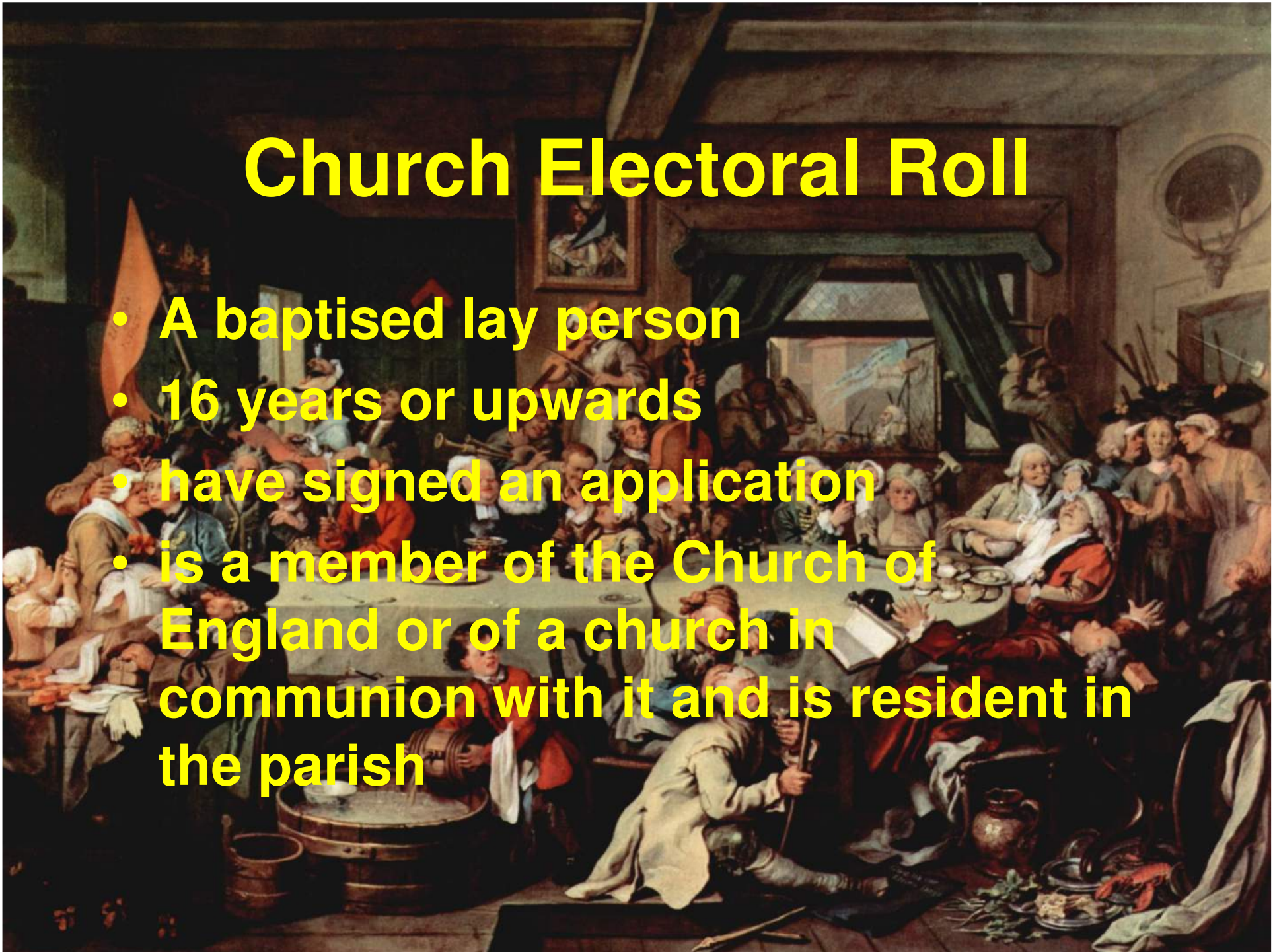


Churchwardens' Duties

- A member of the PCC
- Treasurer
- Trustees of other parochial charities
- Terrier, inventory and log book
- Inspect and report on fabric and contents

Church Electoral Roll

- A baptised lay person
- 16 years or upwards
- have signed an application
- is a member of the Church of England or of a church in communion with it and is resident in the parish



A historical painting depicting a group of men in 17th-century attire, including ruffs and breeches. Some men are holding flags and weapons, suggesting a military or civic procession. The scene is set outdoors with trees and a building in the background. Overlaid on the painting is the title 'Church Electoral Roll' in a stylized yellow font, followed by a list item starting with 'or' and a bullet point describing a condition for membership.

Church Electoral Roll

- or
• is such a member and, not being resident in the parish, has habitually attended public worship in the parish during a period of six months prior to enrolment



Members of the Parochial Church Council

Clergy beneficed in or licensed to the parish

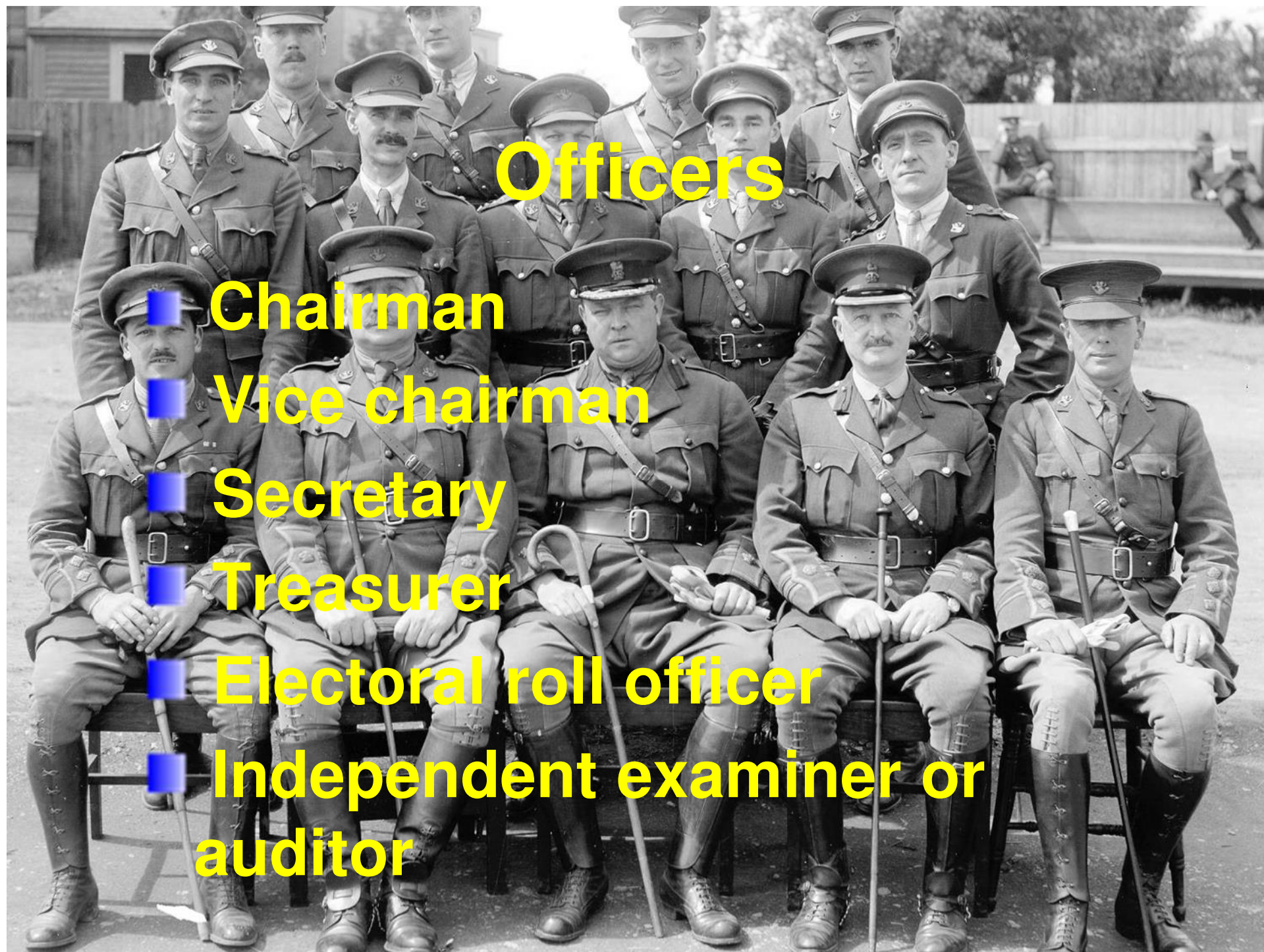
- Churchwardens

- Readers

- Lay members of any deanery, synod or the general synod

- Lay members elected by the annual meeting

- Co-opted members



Officers

- Chairman
- Vice chairman
- Secretary
- Treasurer
- Electoral roll officer
- Independent examiner or auditor



General Provisions

- Church Representation Rules Appendix II



General Provisions

- Standing committee
- Other committees
- Interpretation



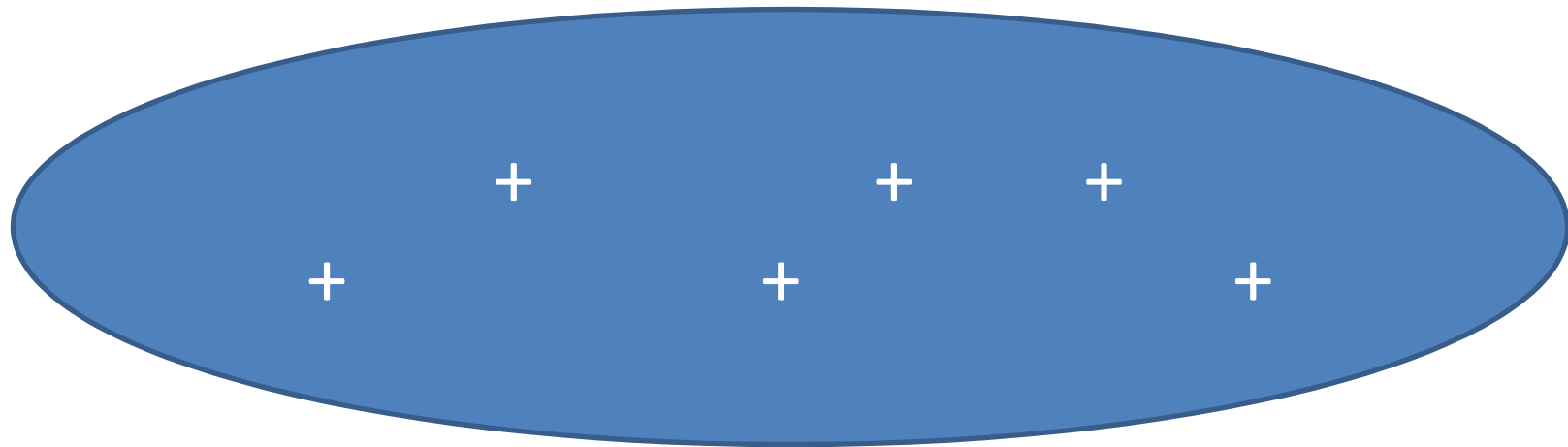
Functions of the PCC

- PCC (Powers) Measure 1956
- Money and finance

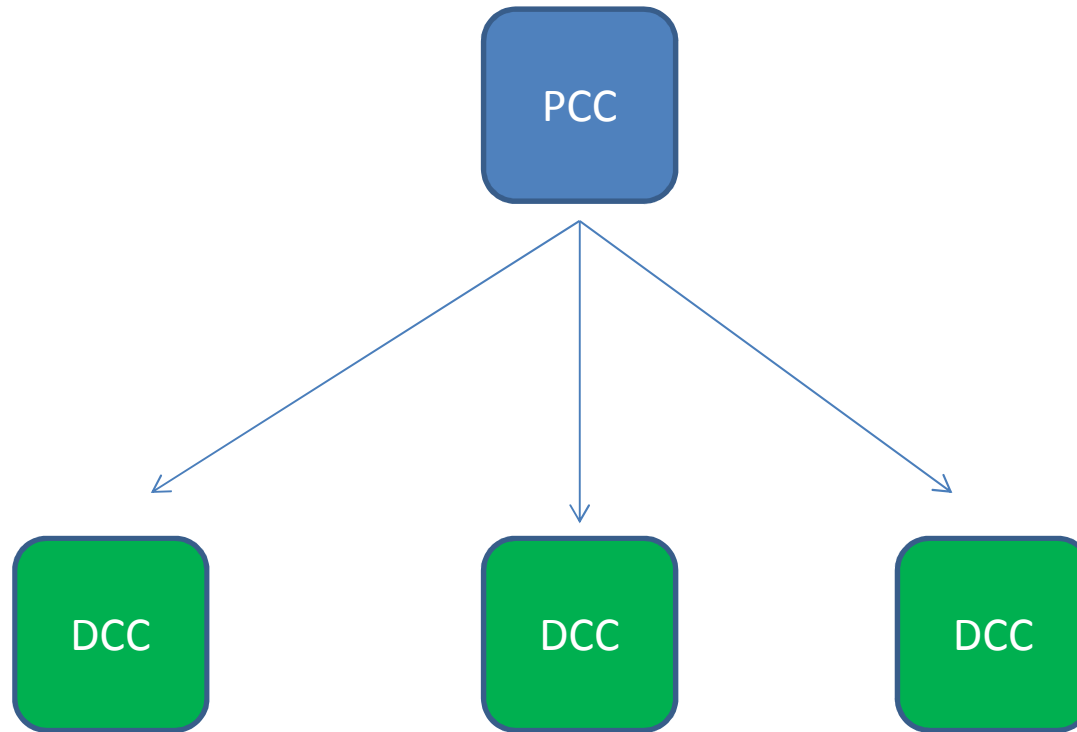
Historic parishes



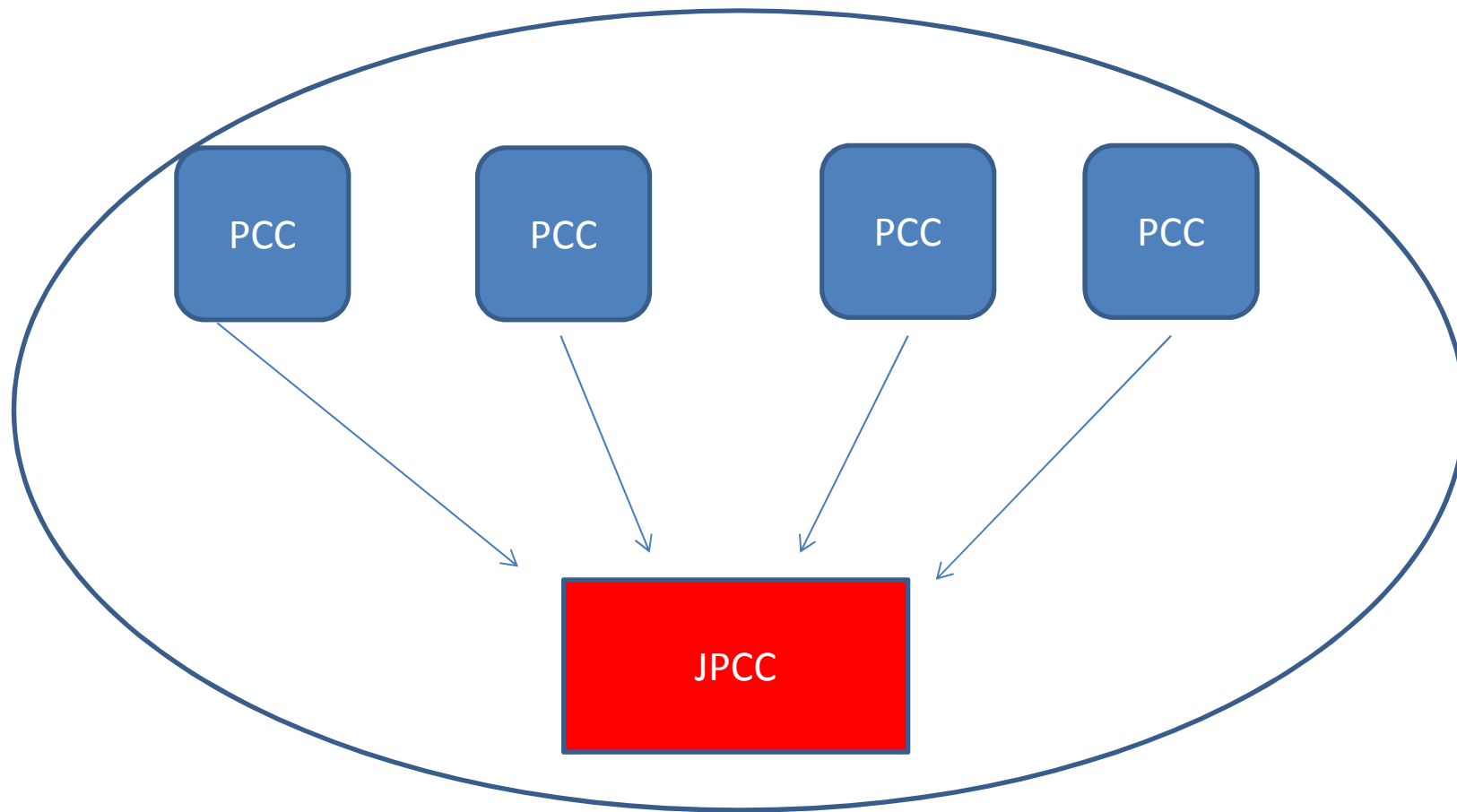
Pastoral reorganisation uniting
parishes into a single parish with a
single PCC responsible for the work of
the Church in the community.



District Church Councils



Joint parochial church council



Advantages

- Fewer meetings
- Better quality meetings
- Fewer officers
- Better use of human resources
- Better use of financial resources
- Better use of buildings



Advantages

- Targeted use for particular churches or buildings in communities
- More effective ecumenism
- Effective organisation of services
- Clergy able to concentrate on that for which they were ordained

A photograph of a middle-aged man with a mustache, wearing a dark suit, white shirt, and a red and blue striped tie. He is sitting in a black office chair behind a wooden desk. On the desk, there is a large desk lamp with a black shade, a blue folder, several papers, and a pen. The man is holding a pair of glasses in his right hand and a pen in his left hand. The text "A Body Corporate" is overlaid in yellow on the center of the image.

A Body Corporate

Land and other Property

- Land is held by the Exeter Diocesan Board of Finance as custodian trustee
- PCC is the managing trustee

Church and Churchyard

- Incumbent of the benefice owns the church and churchyard
- Churchwardens have joint right with him to possession
- PCC maintain and insure it
- Faculty
- Scale Plan
- Health and Safety Officer



Contents of the Church

- Churchwardens are owners
- PCC's duty to preserve them and to insure them
- Security



Insurance

- Buildings
- Third parties





Food and Drink

- Registered under the Food Premises (Registration) Regulations 1991
- Basic hygiene principles
- Temporary event notice

Employees

- Statement of terms and conditions of employment
- Employees have various rights





Sources

- Church Representation Rules
- A Handbook for Churchwardens and Parochial Church Councillors
- Practical Church Management
- Guidance Notes for Churches
- Archdeacons
- Diocesan Registrar
- <http://www.exeter.anglican.org>